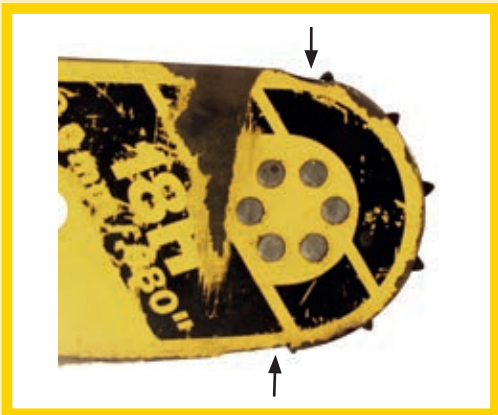


Flange damages



DAMAGE:
Cracking in the chain groove,
excessive wear of the chain groove
behind the end wheel

CAUSE/REASON:
Loose chain



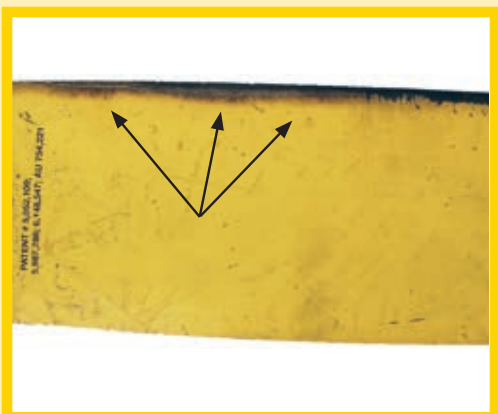
DAMAGE:
Burnt flange tip, broken end wheel

CAUSE/REASON:
Chain too tight



DAMAGE:
Burn marks around rivets; broken/worn,
jammed end wheel

CAUSE/REASON:
Overheat in bearings, clogged oil channel



DAMAGE:
Burn marks on the flange frame

CAUSE/REASON:
Flattened knife groove,
clogged oil channel

Saw bars and accessories



Saw Bars						
Chain Type	Tail	Bar Length	Notes	Sprocket	PONSSE	OREGON
2.0 mm	wide	64 cm		13-15	0065974	0028622
2.0 mm	wide	75 cm		13-15	0065970	0028604
2.0 mm	wide	75 cm		16-17	0065970	0028604
2.0 mm	wide	80 cm		13-15		0061448
2.0 mm	wide	64 cm	UREA	13-15	0066675	00286262
2.0 mm	wide	64 cm	UREA	16-17	0066675	00286262
2.0 mm	wide	75 cm	UREA	13-15	0066673	00286282
2.0 mm	wide	75 cm	UREA	16-17	0066673	00286282
2.0 mm	JET-FIT	75 cm		16-17	0065972	0061207
2.0 mm	JET-FIT	82 cm		13-15		0061956
2.0 mm	JET-FIT	82 cm		16-17	0065971	0060709
2.0 mm	JET-FIT	75 cm	UREA	16-17	0069556	0062323
2.0 mm	JET-FIT	82 cm	UREA	16-17	0066674	0061833
2.0 mm	narrow	64 cm		9-12		0028634
2.0 mm	narrow	75 cm		9-12		0028635
2.0 mm	Top wheels					0036752

* Not for sale in South- and North-America



SPROCKETS

No. of teeth	PONSSE	GB	OREGON	OPEN DRIVE WHEEL
9		(3/4" chain) 0065688		0044349
10			0036755	0044350
11			0036747	0044353
12			0036748	0044352
13	*P8667	0061871		0044351
14	*P11710	0061874		
15		0061872	0036744	
16	P13252			
17	230713	0061873		

*Mushroom-shaped model (used with chain tensioner + small saw motor)



SHARPENING ANGLES

		A	B	D
*16H	7/32" 5.5 mm	35°	10°	.050" 1.3 mm
*18H, 18HX	7/32" 5.5 mm	35°	10°	.050" 1.3 mm

SAW BAR FASTENING

Description	No.
Fastening screw, regular bar	P19842
Fastening screw, JET-FIT bar	P26317
JET-FIT stop screw	231069
Nordlock	0060177
Hex nut, low	0058402
Hex nut, new thick	0064810



SAW CHAIN REEL

Description	PONSSE
2.0 mm	0065976
2.0 mm HX	0067866
Description	OREGON
2.0 mm HX	0039073
Description	STIHL
2.0 mm	0061425
2.0 mm Magnum	0064749



SAW CHAIN PER PIECE

No. of links	PONSSE HX
76	0067863
77	0067884
78	0067864
79	0067885
87	0067886
88	0067865
89	0067887
90	0067888
97	0067867

No. of links	OREGON 2.0 mm
76	00390731
86	0066485
87	00390732
89	00390733
No. of links	STIHL 2.0 mm
76	0064745
77	0065243
78	0064746
86	0062089
87	0062088
88	0065244
89	0062547
90	0062749
94	0062087
95	0064747
97	0064748
100	0066488



0070509

0043951

CHAIN COUPLERS

Description	OREGON 1.6 mm
Male	0043980
Female	0043990
Description	OREGON 2.0 mm
Male	0061130
Female	0066910
Description	OREGON 18x
Male	0066563
Female	0066910
Description	STIHL 1.6 ja 2.0 mm
Male	0064174
Female	0064174
Description	STIHL magnum
Male	0064878

SAW CHAIN MAINTENANCE

Description	No.
Chain sharpener 220V	0043950
Sharpener with a hydraulically assisted clamping system	0057914
Automatic sharpener	0067133
Chain splitter	0044340
Mandrel	0043995
Chain splitter anvil	0060974
Riveter	0044330
Riveter anvil	0043996
Die/tip	0039074
Shaping tool for a sharpening wheel	0071421
Grinding stone	0071482
Arm return spring	0043951
Arm return spring	0070509
Grinding wheel, 145X4,7X22 32660	0028747
Grinding wheel, 145X7,9X22,3 32902	0067084
Grinding wheel, 32660P/N 145X4,7X22,2 OREGON	0070014
Grinding wheel, 150X4,7X16 black	0071611
Grinding wheel, 150X4,0X16 white	0067134
Grinding wheel, CBN148/16 diamond wheel	0071612
Grinding wheel, 150X4X16 blue	0071614